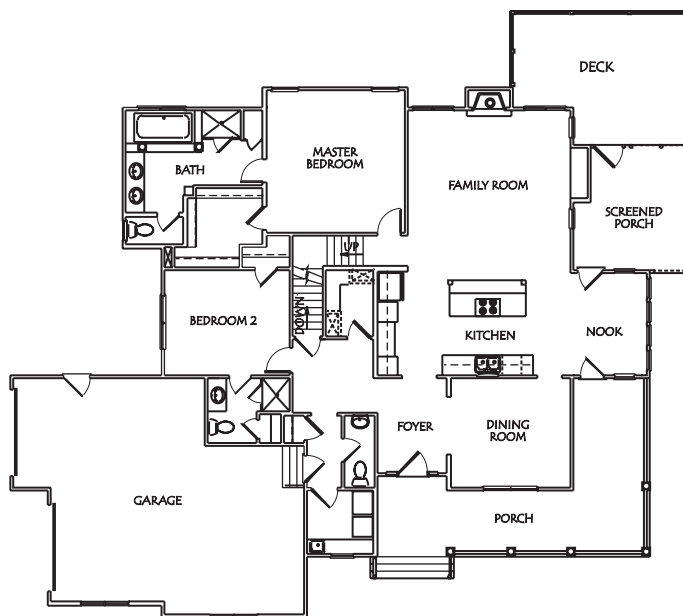


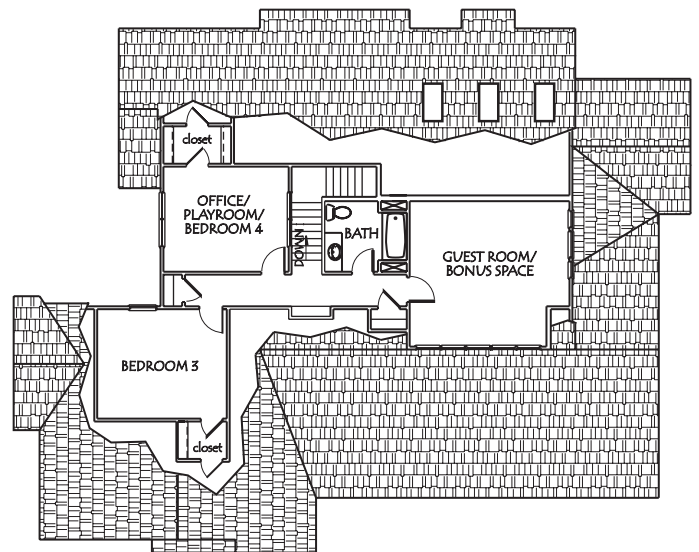
CHARACTER  
 DETAIL  
 BEAUTY  
 SOUL



## THE CAPTIVA II



1<sup>ST</sup> FLOOR PLAN



2<sup>ND</sup> FLOOR PLAN

### SPECIAL FEATURES

- 2,700 Square Feet Finished Living Space
- First Floor Master Bedroom
- Hardi Plank® Fiber-Cement Lap Siding
- 30-Year Architectural Roofing
- Extensive Built-Ins, Cabinetry and Storage
- Flexible Office, Playroom or Guest Area on Second Floor
- Vaulted Family Room with Skylights
- Large Wrap-Around Front Porch
- Screened Porch and Enormous Rear Deck
- Ample Closet and Storage Space
- Insulated Tilt-Out Aluminum-Clad Windows
- 13 Seer Hi-Efficiency Heating/Cooling System
- "Silent Floor:" Engineered Floor System
- Reinforcing Steel Continuous in Engineered Footings
- Drainage Tile Perimeter of Foundation at Interior
- Ridge Vents at All Main Roof Ridges
- Seamless Aluminum Gutters and Downspouts

*This rendering is for illustrative purposes only and is not part of a legal contract. This rendering may include a number of optional features which may be added at an additional cost to the purchaser. Actual building plans are often modified to meet building codes, facilitate mechanical installations and to incorporate design improvements. All dimensions in the rendering are approximate and may vary from actual specifications.*

# DEBENHAUS

DEBENHAUS HOMES INCORPORATED

3201 Barnes Spring Terrace • Midlothian, VA 23112  
 804.744.4770 • 804.744.4254 (fax)  
 debenhaushomes@gmail.com  
 www.debenhaushomes.com