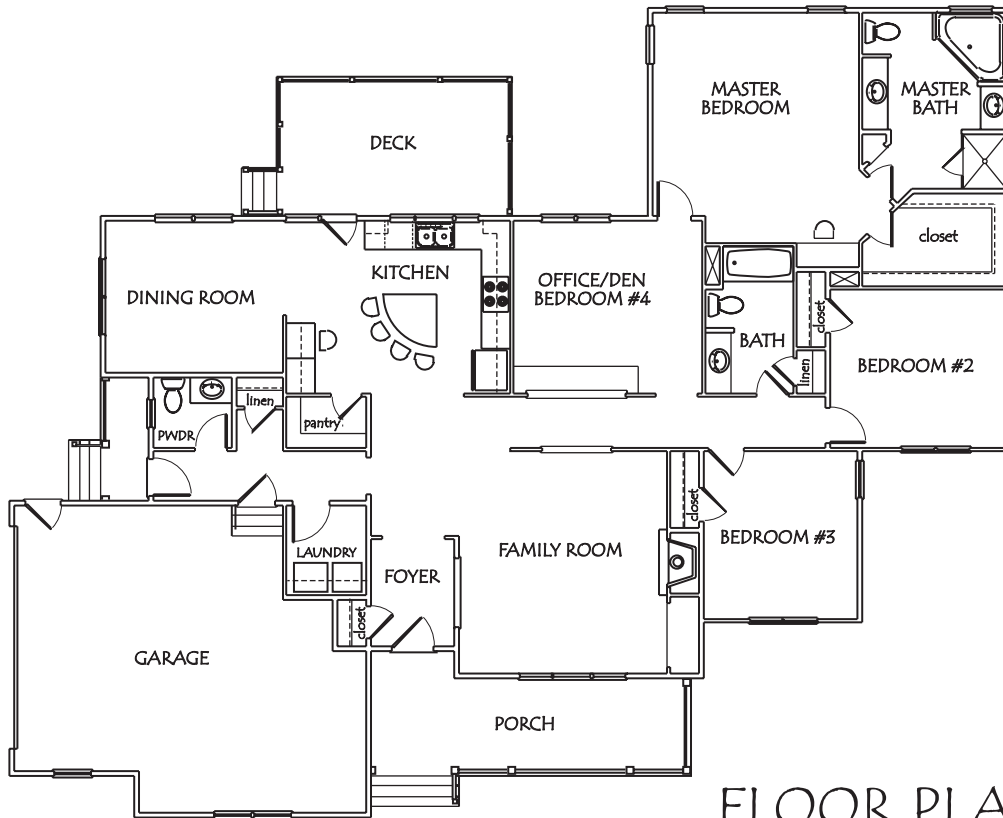


CHARACTER
DETAIL
BEAUTY
SOUL



THE TRADEWINDS



FLOOR PLAN

SPECIAL FEATURES

- 2,300 Plus Square Feet Single Story Living Space
- Maintenance Free Vinyl Siding
- Unique and Functional Layout
- Insulated Tilt-Out Vinyl Windows
- Ample Closet and Storage Space
- First Floor Master Suite
- Extensive Built-Ins; Cabinetry, Bookshelves and Storage
- Oversized Side-Entry, Two-Car Garage
- Flexible Office/Den or Fourth Bedroom
- Spacious Covered Front Porch
- Reinforcing Steel Continuous in Engineered Footings
- Drainage Tile Perimeter of Foundation at Interior
- Thermostatically-Controlled Attic Fan
- Ridge Vents at All Main Roof Ridges

This rendering is for illustrative purposes only and is not part of a legal contract. This rendering may include a number of optional features which may be added at an additional cost to the purchaser. Actual building plans are often modified to meet building codes, facilitate mechanical installations and to incorporate design improvements. All dimensions in the rendering are approximate and may vary from actual specifications.

DEBENHAUS

DEBENHAUS HOMES INCORPORATED

3201 Barnes Spring Terrace • Midlothian, VA 23112
804.744.4770 • 804.744.4254 (fax)
debenhaushomes@gmail.com
www.debenhaushomes.com