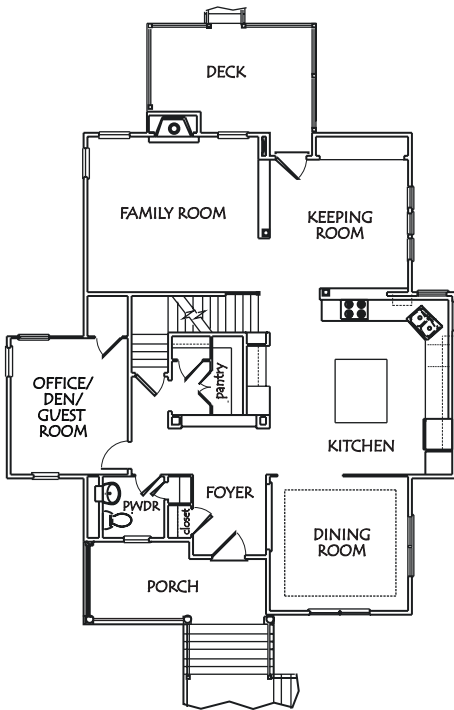
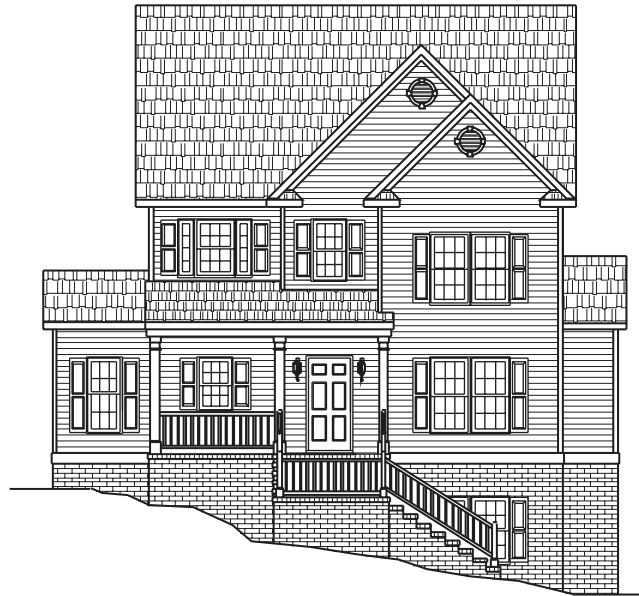
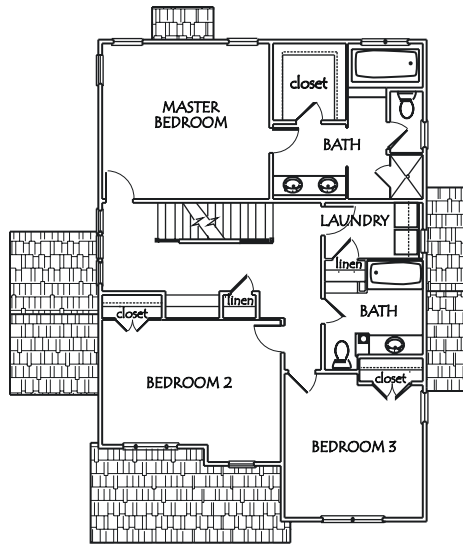


CHARACTER
 DETAIL
 BEAUTY
 SOUL

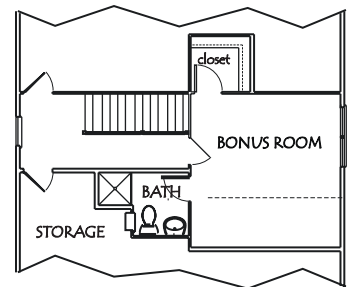
THE WILLOW



1ST FLOOR PLAN



2ND FLOOR PLAN



3RD FLOOR
 PLAN
 (PARTIAL)

SPECIAL FEATURES

- 2,600 Square Feet Conditioned Living Space
- Insulated 'Superior Wall' Basement System (10' walls)
- Oversized Side Entry Two-Car Garage
- Additional 400sf Unfinished in Basement
- First Floor Office (or Den)
- Spacious Covered Front Porch
- Finishable Walk-Up Third Level
- Maintenance Free Vinyl Siding
- 30-Year Architectural Shingles
- Insulated Tilt-Out Vinyl Windows
- Enormous Kitchen with Center Island
- Extensive Hardwood Flooring
- Ample Closet and Storage Space
- Two-Zone 13 SEER Heating and Air Conditioning System
- Extensive Built-Ins: Cabinetry, Bookshelves, and Storage
- In-Line Water Filtration System
- Seamless Aluminum Gutters and Downspouts
- "Silent Floor:" Engineered Floor System

This rendering is for illustrative purposes only and is not part of a legal contract. This rendering may include a number of optional features which may be added at an additional cost to the purchaser. Actual building plans are often modified to meet building codes, facilitate mechanical installations and to incorporate design improvements. All dimensions in the rendering are approximate and may vary from actual specifications.



DEBENHAUS HOMES INCORPORATED

3201 Barnes Spring Terrace • Midlothian, VA 23112
 804.744.4770 • 804.744.4254 (fax)
 debenhaushomes@gmail.com
 www.debenaushomes.com